

**AERIAL VIEW OF SITE**  
NOT TO SCALE

**SIGNAGE SCHEDULE:**

- 001 **A** B1ng | INT. ILLUMINATED MONUMENT SIGN | QTY: ONE (1) | 25.4 SQ.FT.
- 002 **B** D4ng | WALL SIGN | CHANNEL LETTERS | QTY: TWO (2) | 26.66 SQ.FT.
- 003
- 004 **C** CUSTOM SIGN FOR EXISTING PYLON | QTY: ONE (1) | 9.59 SQ.FT.
- 005 **D** RP1ng | S/F REGULATORY POLE SIGN | QTY: FIVE (5) | 2.25 SQ.FT.
- 006 008
- 007 009
- 010 **E** HCD-1ng | S/F REGULATORY POLE SIGN | QTY: ONE (1) | 4.0 SQ.FT.
- 011 **F** HCD-1ng | S/F REGULATORY POLE SIGN | QTY: TWO (2) | 4.0 SQ.FT.
- 012
- 013 **G** P1ng | 2'-6" X 3'-0" D/F DIRECTIONAL | QTY: ONE (1) | 2.65 SQ.FT.
- 014 **H** DOOR VINYL | QTY: ONE (1)
- 015 **I** RW1ng | S/F WALL PLAQUE | QTY: ONE (1) | 2.12 SQ.FT.
- 016 **J** P1ng | 2'-6" X 3'-0" D/F DIRECTIONAL | QTY: ONE (1) | 2.65 SQ.FT.
- 017 **K** P1ng | 2'-6" X 3'-0" D/F DIRECTIONAL | QTY: ONE (1) | 2.65 SQ.FT.
- 018 **L** REGULATORY SIGN | **REMOVAL ONLY** | QTY: ONE (1)
- 019 **M** SS3ng | INFORMATIONAL REGULATORY | QTY: ONE (1) | 2.879 SQ.FT.
- 020 **N** SS1ng | INFORMATIONAL REGULATORY | QTY: TWO (2) | 2.879 SQ.FT.
- 021
- 022 **O** S/F Z-DOT DO NOT ENTER POLE SIGN | QTY: ONE (1)
- 022a
- 022b
- 023 **P** S/F Z-DOT DO NOT ENTER POLE SIGN | QTY: ONE (1)
- 023a
- 023b
- 024 **Q** P1ng | 2'-6" X 3'-0" D/F DIRECTIONAL | QTY: ONE (1) | 2.65 SQ.FT.
- 025 **R** S/F Z-DOT DO NOT ENTER POLE SIGN | QTY: ONE (1)
- ATM 1 | **NOT IN F.H. SCOPE**
- ATM 2 | **NOT IN F.H. SCOPE**

**FEDERAL HEATH**  
VISUAL COMMUNICATIONS  
www.FederalHeath.com  
625 Market Street, Suite 600 Knoxville, TN 37902  
(865) 246-6020 Fax (865) 246-6021

Manufacturing Facilities:  
Oceanside, CA - Euless, TX - Jacksonville, TX  
Delaware, OH - Racine, WI  
Office Locations:  
Oceanside, CA - Las Vegas, NV - Laughlin, AZ  
Idaho Falls, ID - Euless, TX - Jacksonville, TX - San Antonio, TX  
Houston, TX - Corpus Christi, TX - Indianapolis, IN  
Louisville, KY - Knoxville, TN - Grafton, WI - Delaware, OH  
Willowbrook, IL - Tunica, MS - Atlanta, GA  
Tampa, FL - Daytona Beach, FL - Orlando, FL

Revisions:  
**R1 BW 2.26.21** *Revise red vinyl spec for A & fab specs for C.*

Colors Depicted In This Rendering May Not Match Actual Finished Materials. Refer To Product Samples For Exact Color Match.

Client Approval/Date: \_\_\_\_\_  
Landlord Approval/Date: \_\_\_\_\_

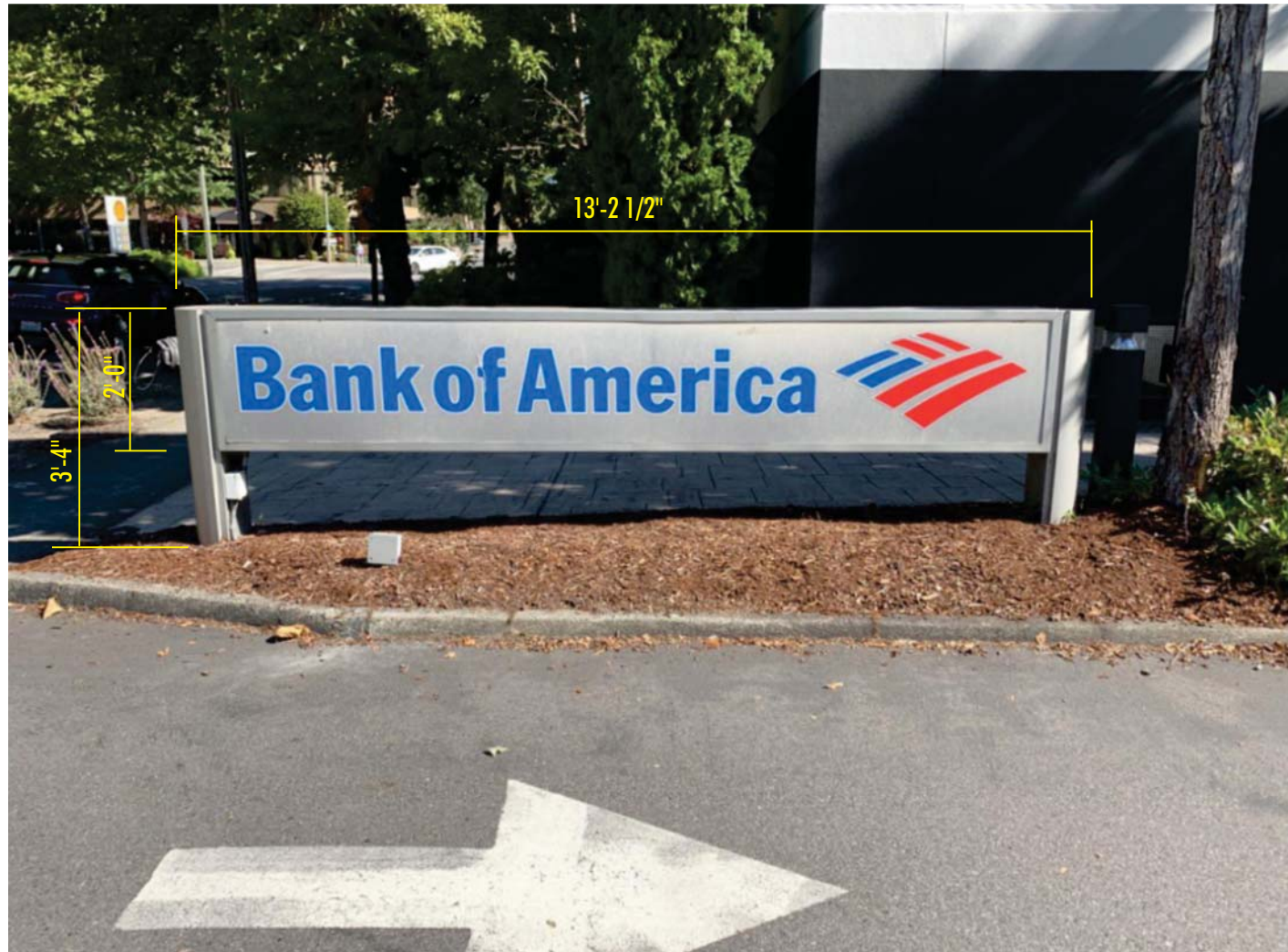
Account Rep: John Brown  
Project Manager: Kenny Smith  
Drawn By: Brian Wood

**UL** Underwriters Laboratories Inc. **nec** ELECTRICIAL TO USE U.L. LISTED COMPONENTS AND SHALL MEET ALL N.E.C. STANDARDS  
ALL ELECTRICAL SIGNS ARE TO COMPLY WITH U.L. 48 AND ARTICLE 600 OF THE N.E.C. STANDARDS, INCLUDING THE PROPER GROUNDING AND BONDING OF ALL SIGNS.

Project / Location:  
**BANK OF AMERICA**  
Location # WA3-143  
2830 80th Avenue SE  
Mercer Island, WA 98040

Job Number: 23-60944-10  
Date: September 28, 2020  
Sheet Number: 1 Of 28  
Design Number: **23-60944-10 R1**

This original drawing is provided as part of a planned project and is not to be exhibited, copied or reproduced without the written permission of Federal Heath Sign Company, LLC or its authorized agent. ©FHSC



EXISTING SIGNAGE | TO BE REMOVED & DISCARDED



PROPOSED SIGNAGE | INSTALL IN SAME POSITION AS EXISTING | RESTORE LANDSCAPING TO PREVIOUS CONDITION

**A**  
001



**VISUAL COMMUNICATIONS**  
www.FederalHeath.com

625 Market Street, Suite 600 Knoxville, TN 37902  
(865) 246-6020 Fax (865) 246-6021

Manufacturing Facilities:  
Oceanside, CA - Euless, TX - Jacksonville, TX  
Delaware, OH - Racine, WI  
Office Locations:  
Oceanside, CA - Las Vegas, NV - Laughlin, AZ  
Idaho Falls, ID - Euless, TX - Jacksonville, TX - San Antonio, TX  
Houston, TX - Corpus Christi, TX - Indianapolis, IN  
Louisville, KY - Knoxville, TN - Grafton, WI - Delaware, OH  
Willowbrook, IL - Tunica, MS - Atlanta, GA  
Tampa, FL - Daytona Beach, FL - Orlando, FL

Building Quality Signage Since 1901

Revisions:

R1 BW 2.26.21 Revise red vinyl spec for A & fab specs for C.

Colors Depicted In This Rendering May Not Match Actual Finished Materials. Refer To Product Samples For Exact Color Match.

Client Approval/Date: \_\_\_\_\_

Landlord Approval/Date: \_\_\_\_\_

Account Rep: John Brown

Project Manager: Kenny Smith

Drawn By: Brian Wood

Underwriters Laboratories Inc. ELECTRICAL TO USE U.L. LISTED COMPONENTS AND SHALL MEET ALL N.E.C. STANDARDS  
ALL ELECTRICAL SIGNS ARE TO COMPLY WITH U.L. 48 AND ARTICLE 600 OF THE N.E.C. STANDARDS, INCLUDING THE PROPER GROUNDING AND BONDING OF ALL SIGNS.

Project / Location:



Location # WA3-143  
2830 80th Avenue SE  
Mercer Island, WA 98040

Job Number: 23-60944-10

Date: September 28, 2020

Sheet Number: 2 Of 28

Design Number: 23-60944-10 R1

This original drawing is provided as part of a planned project and is not to be exhibited, copied or reproduced without the written permission of Federal Heath Sign Company, LLC or its authorized agent. ©FHSC

## Specifications:

### NOTES:

- .125" ALUMINUM SIGN FACE. PAINT FINISH GARBO SILVER. GLOSS FINISH. WELD ALUMINUM SHEETS TOGETHER AS REQUIRED, AND GRIND SMOOTH FOR MONOLITHIC APPEARANCE. CHEM WELD TO ALUMINUM TUBE FRAME.
- .125" ALUMINUM SIGN FACE BACKING SHEET. PAINT FINISH BANK OF AMERICA RED. SEMI-GLOSS FINISH.
- .125" BREAK FORMED ALUMINUM POLE CLADDING END CAPS. FORM AS SHOWN. END CAP CLADDING TO MECHANICALLY ATTACH TO PRIMARY POLE CLADDING. PAINT FINISH ALL EXPOSED SURFACES BANK OF AMERICA RED. SEMI-GLOSS FINISH. WELD CLADDING TO INTERMITTENT ALUMINUM BAFFLES TO HOLD SHAPE. OUTBOARD PANEL TO BE REMOVABLE FOR ACCESS FOR ATTACHMENT. "Z" CLIP ONE END TO CLADDING FRAME AND MECHANICALLY ATTACH THE OTHER END WITH COUNTERSUNK FLATHEAD STAINLESS STEEL SCREWS. PAINT HEADS TO MATCH.
- POLE CLADDING DETAIL TO BE ALUCOBOND 4mm NATURAL BRUSHED 50 ACM. "V" GROOVE BACK AND FOLD RETURNS AT SIDES AND ENDS (KNUCKLE JOINT AT SEAM). SECURE TO COLUMN CLADDING WITH 3M DUAL LOCK FASTNER SYSTEM (3M SJ 3550/250). PROVIDE ALUMINUM ANGLE REINFORCEMENT AT SIDES.
- 3"x3"x.125" ALUMINUM TUBE FACE FRAME. FORM AS SHOWN. MITER CUT, WELD AND GRIND SMOOTH AT CORNERS. PAINT FINISH ALL EXPOSED SURFACES GARBO SILVER. GLOSS FINISH.
- .125" ALUMINUM CLADDING FORM AS SHOWN. PAINT FINISH BANK OF AMERICA RED. SEMI-GLOSS FINISH. LOWER PORTION TO BE REMOVABLE TO ACCESS MATCH PLATE. UPPER PORTION TO BE FIXED TO HOUSE U.L. CUTOFF SWITCH. SEE ELEVATIONS FOR PANEL SEAM. ON CUTOFF SWITCH SIDE ONLY.
- BLUE LETTER FACE AND BLUE PORTIONS OF FLAGSCAPE TO BE 1/2" PLASKOLITE 2406 LD ACRYLIC. ROUT 5/16" FROM BACK TO FRONT LEAVING A 3/16" THICK BY 5/32" WIDE "SHOULDER" AT THE FACE. FIRST SURFACE DECORATE WITH BANK OF AMERICA BLUE TRANSLUCENT FILM WITH OVER LAMINATE. USE ARTWORK PROVIDED BY DESIGNER. EXPOSED RETURNS TO HAVE A MILL FINISH. SECURE WITH 3/8" SHORT SHANK FLATHEAD STAINLESS STEEL SCREWS INTO CENTER OF 3/8" ACRYLIC FACE RETURN. PRE-DRILL ONLY TO SCREW DEPTH TO PREVENT TELEGRAPHING
- LETTER RETURNS TO BE .040" ALUMINUM COIL BRITE BRUSHED CLEAR BY ALUMET SUPPLY. (888-925-8638) FORM AS SHOWN. USE ARTWORK PROVIDED BY DESIGNER. RUN A BEAD OF CLEAR SILICONE CAULK ACROSS THE TOPS OF THE FABRICATED LETTERS AND FLAGSCAPE ELEMENTS AT THE SIGN FACE TO PREVENT "STREAKING" ON FACE.
- RED PORTIONS OF SYMBOL TO BE 1/2" PLASKOLITE 2406 LD ACRYLIC. ROUT 5/16" FROM BACK TO FRONT LEAVING A 3/16" THICK BY 5/32" WIDE "SHOULDER" AT THE FACE. FIRST SURFACE DECORATE WITH BANK OF AMERICA RED TRANSLUCENT FILM WITH OVER LAMINATE. USE ARTWORK PROVIDED BY DESIGNER. EXPOSED RETURNS TO HAVE A MILL FINISH. SECURE WITH 3/8" SHORT SHANK FLATHEAD STAINLESS STEEL SCREWS INTO CENTER OF 3/8" ACRYLIC FACE RETURN. PRE-DRILL ONLY TO SCREW DEPTH TO PREVENT TELEGRAPHING.
- RUN A BEAD OF CLEAR SILICONE CAULK ACROSS THE TOPS OF THE FABRICATED LETTERS AND FLAGSCAPE ELEMENTS AT THE SIGN FACE TO PREVENT "STREAKING" ON FACE.
- LOCATE U.L. LABEL ON LOWER CORNER OF CLADDING BEHIND SIGN FACE.
- EXTERNAL CUTOFF SWITCH NEXT TO U.L. LABEL

### GENERAL NOTES:

- FINAL SIZING FOR ALL STRUCTURAL MEMBERS (i.e. COLUMNS, MATCH PLATES, CONNECTION BOLTS, ANCHOR BOLTS, FOUNDATIONS AND REINFORCEMENT) TO BE SIZED BY A LICENSED ENGINEER TO MEET OR EXCEED ALL APPLICABLE LOCAL, STATE, AND FEDERAL CODES.
- FABRICATOR IS RESPONSIBLE FOR THE PREVENTION OF ANY LIGHT LEAKS.
- LEADS FROM BACK OF ILLUMINATED LETTERS / SYMBOL SHALL BE A MINIMUM OF 6'-0" IN LENGTH MEASURED FROM THE BACK SURFACE OF THE LETTERS / SYMBOL.
- PAINT INTERIORS OF ALL CABINETS WITH SPRAY-LAT STAR BRITE WHITE LIGHT ENHANCEMENT PAINT.
- ALL PAINT TO BE TWO-PART POLYURETHANE.
- COLOR FILM TO BE MATCHED IN 3M #3630 SERIES FILM.

**STANDARD INSTALL IS TO BE DIRECT PIPE EMBEDMENT INTO CONCRETE FOOTING PER FH ENGINEERING SPECS.**

**MANUFACTURING WILL PROVIDE A STUB PIPE WITH SIGN CABINETS ONLY IF O.A.H. (CABINET + STUB PIPE) DOES NOT EXCEED 9'-7" MAXIMUM SHIPPING HEIGHT RESTRICTIONS.**

**ALL SUPPORTING STEEL, INCLUDING STUB PIPE, IF NOT INCLUDED WITH CABINET, TO BE SHIPPED TO INSTALLATION SITE BY AN OUTSIDE SUPPLIER OR BY THE INSTALLATION CONTRACTOR, AS DETERMINED BY PROJECT MANAGEMENT.**

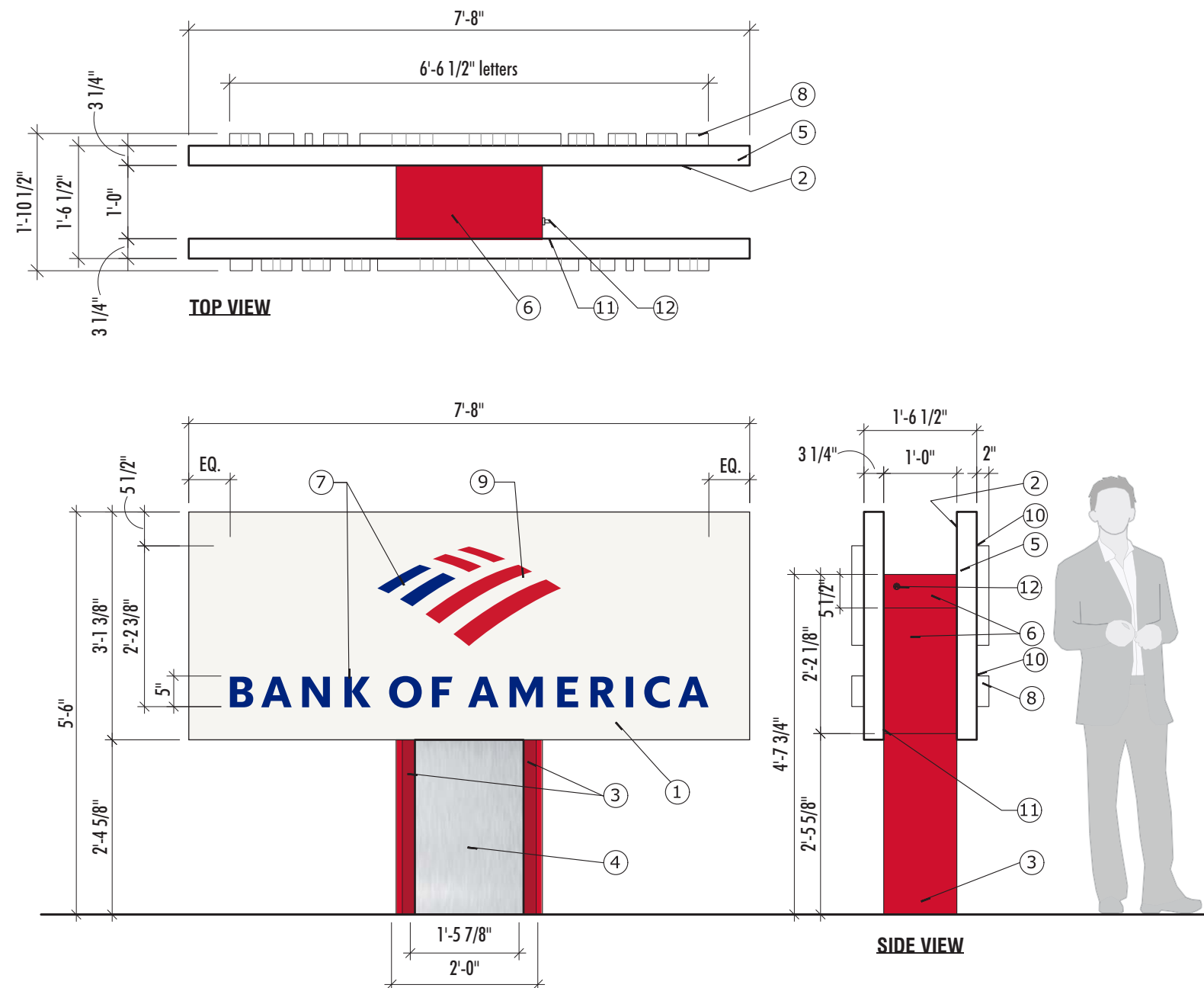
**NOTE: UPON CUSTOMER ACCEPTANCE, FEDERAL HEATH ENGINEERING DEPARTMENT WILL PROVIDE FABRICATION DRAWINGS & ENGINEERED SEAL DRAWINGS IF REQUIRED THIS DRAWING IS FOR PRESENTATION ONLY**

INSTALLATION OF THIS SIGN SHALL CONFORM TO ARTICLE 600 OF THE NEC, UL48, AND OR OTHER APPLICABLE LOCAL CODES, INCLUDING PROPER GROUNDING AND BONDING OF SIGN.

LOCATION OF DISCONNECT SWITCH AFTER INSTALLATION SHALL COMPLY WITH ARTICLE 600.6(A) OF THE NEC.

MATERIAL SPECIFICATIONS	
ACM	-ALUCOBOND NATURAL BRUSHED 50
PAINT	-CHAMPAGNE METALLIC - EITHER AKZO-NOBEL # BNK 250, MATTHEWS # MP 21314, MATTHEWS #SOA6194SP, OR MATTHEWS #SVOC1272SP (VOC COMPLIANT)
	- RED - MATTHEWS RED # MP 49696, AKZO-NOBEL #SIGN 20129
	- BLUE - MATTHEWS BLUE #MP 74693 R182233
	- WHITE - MATTHEWS WHITE # MP 21668R 6595.
	- DK GRAY (PMS 425) - MATTHEWS #MP58477
	- COOL GRAY 3 (PMS 3)
	- COOL GRAY 6 (PMS 6)
	- GARBO SILVER - MATTHEWS #MP02650R14405 LVG FULL GLOSS
	-CAMPBELL SOUP RED - MATTHEWS MP10252 FINE STIPPLE
	-MICA BLACK SANDTEX - SHERWIN WILLIAMS MBSL00042 R2
	-SILVER METALLIC - MATTHEWS #MP19894 STAINLESS STEEL METALLIC
FILM	- TRANSLUCENT BLUE - 3M 3630-8530 W/ OVERLAM 3M 3660M
	- TRANSLUCENT RED - 3M 3630-2413 W/ OVERLAM 3M 3660M
	- TRANSLUCENT WHITE - 3M 3630-20 W/ OVERLAM 3M 3660M
	- DIFFUSER WHITE - 3M 3635-30
	- DIFFUSER WHITE - 3M 3635-70
	- OPAQUE WHITE - 3M# 7725-10
	- REFLECTIVE BLUE - 3M # 680-75 BLUE
	- DUAL COLOR BLUE - 3M DN00502 (MATCH 280 BLUE)
	- DUAL COLOR RED - 3M DN00507 (MATCH 186 RED)
ACRYLIC	- CHANNEL LETTERS FACES, PLASKOLITE 2406 LD
	- WHITE TRANSLUCENT-ACRYSTEEL #7328 OR APPROVED EQ.
	- BLUE #2050 TRANSLUCENT ACRYLIC
	- RED #2793 TRANSLUCENT ACRYLIC

THE LETTER "K" IS TO BE FABRICATED IN 2 SEPARATE ELEMENTS AND KISSED TOGETHER AT THE POINT. SEE DETAIL SHEETS. CAULK THE SEAM BETWEEN THE 2 ELEMENTS AFTER INSTALLATION.



**A1** B1NG | 5.5' D/F INTERNALLY ILLUMINATED MONUMENT SIGN | QTY: ONE (1) | 25.4 SQ.FT.

Scale : 1/2" = 1'-0"

001



**VISUAL COMMUNICATIONS**  
www.FederalHeath.com

625 Market Street, Suite 600 Knoxville, TN 37902  
(865) 246-6020 Fax (865) 246-6021

Manufacturing Facilities:  
Oceanside, CA - Euless, TX - Jacksonville, TX  
Delaware, OH - Racine, WI  
Office Locations:  
Oceanside, CA - Las Vegas, NV - Laughlin, AZ  
Idaho Falls, ID - Euless, TX - Jacksonville, TX - San Antonio, TX  
Houston, TX - Corpus Christi, TX - Indianapolis, IN  
Louisville, KY - Knoxville, TN - Grafton, WI - Delaware, OH  
Willowbrook, IL - Tunica, MS - Atlanta, GA  
Tampa, FL - Daytona Beach, FL - Orlando, FL

Building Quality Signage Since 1901

### Revisions:

R1 BW 2.26.21 Revise red vinyl spec for A & fab specs for C.

Colors Depicted In This Rendering May Not Match Actual Finished Materials. Refer To Product Samples For Exact Color Match.

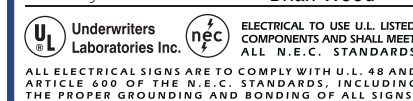
Client Approval/Date: \_\_\_\_\_

Landlord Approval/Date: \_\_\_\_\_

Account Rep: John Brown

Project Manager: Kenny Smith

Drawn By: Brian Wood



Project / Location:



Location # WA3-143  
2830 80th Avenue SE  
Mercer Island, WA 98040

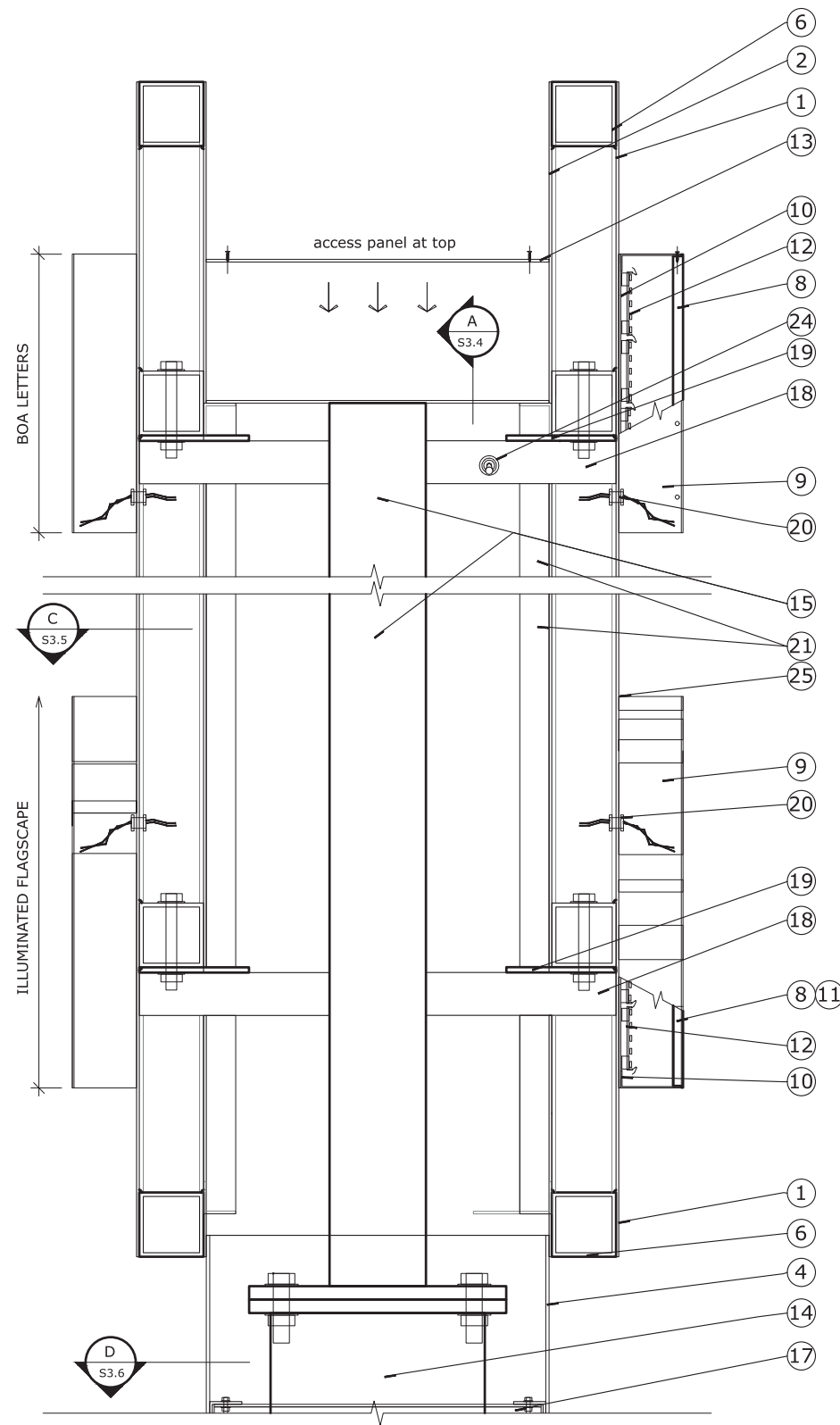
Job Number: 23-60944-10

Date: September 28, 2020

Sheet Number: 3 Of 28

Design Number: 23-60944-10 R1

This original drawing is provided as part of a planned project and is not to be exhibited, copied or reproduced without the written permission of Federal Heath Sign Company, LLC or its authorized agent. ©FHSC

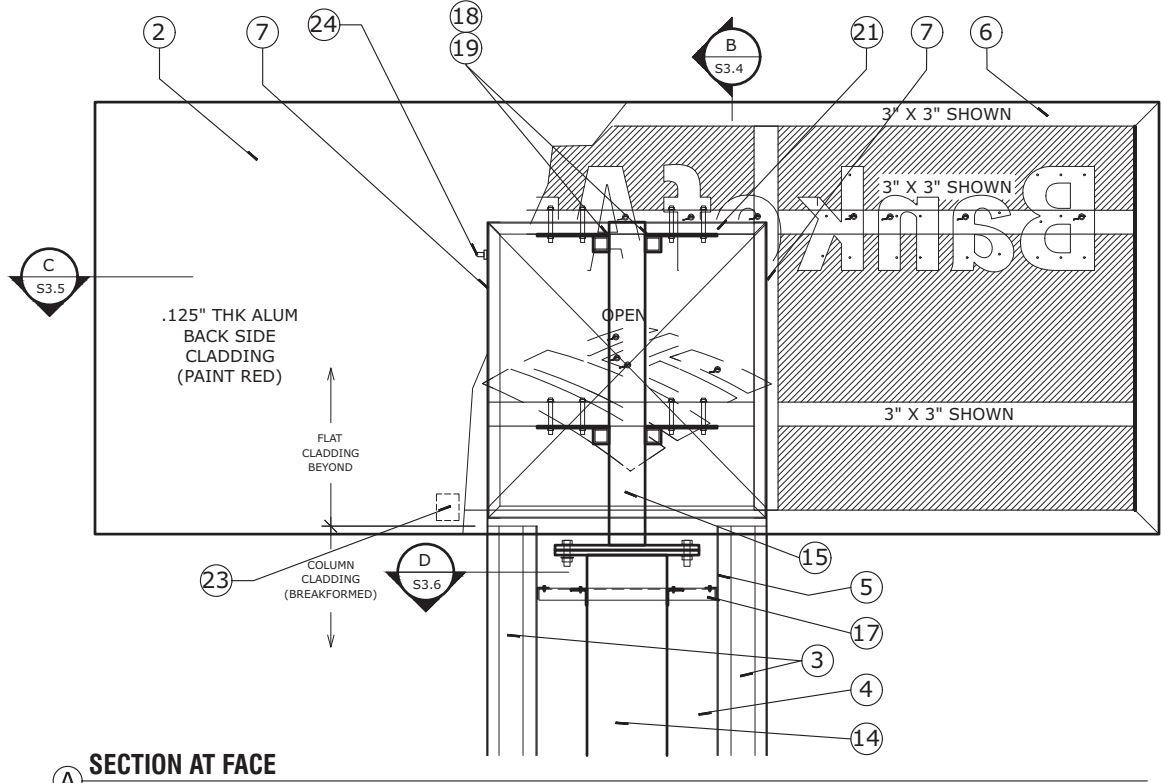
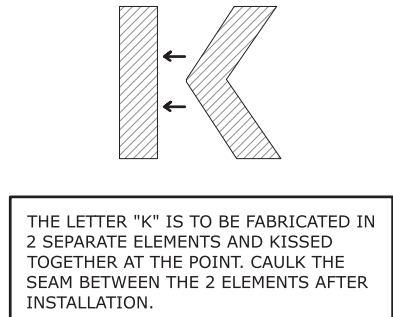


**B VERTICAL SECTION**  
SCALE: 1 1/2" = 1'-0"

**NOTES FOR MONUMENT SECTIONS**

- .125" ALUMINUM SIGN FACE. PAINT FINISH GARBO SILVER. GLOSS FINISH. WELD ALUMINUM SHEETS TOGETHER AS REQUIRED, AND GRIND SMOOTH FOR MONOLITHIC APPEARANCE. CHEM WELD TO ALUMINUM TUBE FRAME.
- .125" ALUMINUM SIGN FACE BACKING SHEET. PAINT FINISH BANK OF AMERICA RED. SEMI-GLOSS FINISH.
- .125" BREAK FORMED ALUMINUM POLE CLADDING END CAPS. FORM AS SHOWN. END CAP CLADDING TO MECHANICALLY ATTACH TO PRIMARY POLE CLADDING. PAINT FINISH ALL EXPOSED SURFACES BANK OF AMERICA RED. SEMI-GLOSS FINISH. WELD CLADDING TO INTERMITTENT ALUMINUM BAFFLES TO HOLD SHAPE. OUTBOARD PANEL TO BE REMOVABLE FOR ACCESS FOR ATTACHMENT. "Z" CLIP ONE END TO CLADDING FRAME AND MECHANICALLY ATTACH THE OTHER END WITH COUNTERSUNK FLATHEAD STAINLESS STEEL SCREWS. PAINT HEADS TO MATCH.
- POLE CLADDING DETAIL TO BE ALUCOBOND 4mm NATURAL BRUSHED 50 ACM. "V" GROOVE BACK AND FOLD RETURNS AT SIDES AND ENDS (KNUCKLE JOINT AT SEAM). SECURE TO COLUMN CLADDING WITH 3M DUAL LOCK FASTNER SYSTEM (3M SJ 3550/250). PROVIDE ALUMINUM ANGLE REINFORCEMENT AT SIDES.
- .125" POLE CLADDING. FORM AS SHOWN. PAINT FINISH BANK OF AMERICA RED. SEMI-GLOSS FINISH. WELD TO ALUMINUM ANGLE FRAMING.
- 3"x3"x.125" ALUMINUM TUBE FACE FRAME. FORM AS SHOWN. MITER CUT, WELD AND GRIND SMOOTH AT CORNERS. PAINT FINISH ALL EXPOSED SURFACES GARBO SILVER. GLOSS FINISH.
- .125" ALUMINUM CLADDING FORM AS SHOWN. PAINT FINISH BANK OF AMERICA RED. SEMI-GLOSS FINISH. LOWER PORTION TO BE REMOVABLE TO ACCESS MATCH PLATE. UPPER PORTION TO BE FIXED TO HOUSE U.L. CUTOFF SWITCH. SEE ELEVATIONS FOR PANEL SEAM. ON CUTOFF SWITCH SIDE ONLY.
- BLUE LETTER FACE AND BLUE PORTIONS OF FLAGSCAPE TO BE 1/2" PLASKOLITE 2406 LD ACRYLIC. ROUT 5/16" FROM BACK TO FRONT LEAVING A 3/16" THICK BY 5/32" WIDE "SHOULDER" AT THE FACE. FIRST SURFACE DECORATE WITH BANK OF AMERICA BLUE TRANSLUCENT FILM WITH OVER LAMINATE. USE ARTWORK PROVIDED BY DESIGNER. EXPOSED RETURNS TO HAVE A MILL FINISH. SECURE WITH 3/8" SHORT SHANK FLATHEAD STAINLESS STEEL SCREWS INTO CENTER OF 3/8" ACRYLIC FACE RETURN. PRE-DRILL ONLY TO SCREW DEPTH TO PREVENT TELEGRAPHING.
- LETTER RETURNS TO BE .040" ALUMINUM COIL BRITE BRUSHED CLEAR BY ALUMET SUPPLY. (888-925-8638) FORM AS SHOWN. USE ARTWORK PROVIDED BY DESIGNER. RUN A BEAD OF CLEAR SILICONE CAULK ACROSS THE TOPS OF THE FABRICATED LETTERS AND FLAGSCAPE ELEMENTS AT THE SIGN FACE TO PREVENT "STREAKING" ON FACE.
- LETTER BACKS TO BE .090" ALUMINUM. PAINT FINISH INTERIOR SURFACES WITH LIGHT ENHANCEMENT PAINT.
- RED PORTIONS OF SYMBOL FACE TO BE 1/2" PLASKOLITE 2406 LD ACRYLIC. ROUT 5/16" FROM BACK TO FRONT LEAVING A 3/16" THICK BY 5/32" WIDE "SHOULDER" AT THE FACE. FIRST SURFACE DECORATE WITH BANK OF AMERICA RED TRANSLUCENT FILM WITH OVER LAMINATE. USE ARTWORK PROVIDED BY DESIGNER. EXPOSED RETURNS TO HAVE A MILL FINISH. SECURE WITH 3/8" SHORT SHANK FLATHEAD STAINLESS STEEL SCREWS INTO CENTER OF 3/8" ACRYLIC FACE RETURN. PRE-DRILL ONLY TO SCREW DEPTH TO PREVENT TELEGRAPHING.
- LED LIGHT SOURCE TO BE AGILIGHT OR APPROVED EQUAL LED MODULES AS REQUIRED TO PROVIDE EVEN ILLUMINATION ACROSS SIGN FACE WITH OUT HOT SPOTS OR SHADOWS. COLOR TO BE WHITE 6500K. LED MANUFACTURER TO PROVIDE MODULE SPECIFICATION, LAYOUT AND POWER SUPPLY SPECIFICATION AND QUANTITY.
- .125" FLUSHED IN ALUMINUM ACCESS PANELS AS REQUIRED. PAINT FINISH BANK OF AMERICA RED. SEMI-GLOSS FINISH. ATTACH WITH COUNTERSUNK FLATHEAD STAINLESS STEEL SCREWS. PAINT HEADS TO MATCH.
- SQUARE STEEL MAIN SUPPORT TUBE. (10"x 10" Shown in example). WELD MATCH PLATES TOP AND BOTTOM. WELD STEEL ANGLES AT 24" O.C. VERTICALLY FOR SUPPORT OF COLUMN CLADDING BAFFLES. FINAL SIZING OF TUBE TO BE BY A LICENSED STRUCTURAL ENGINEER TO MEET OR EXCEED ALL APPLICABLE LOCAL, STATE AND NATIONAL CODES.
- SQUARE STEEL HEAD SUPPORT TUBE. SIZE AS REQUIRED BY A LICENSED STRUCTURAL ENGINEER TO MEET OR EXCEED ALL APPLICABLE LOCAL, STATE AND NATIONAL CODES. WELD MATCH PLATE TO BASE. WELD TOP PLAT OT PROVIDE ATTACHMENT SURFACE FOR CLADDING FRAMING.
- .125" ALUMINUM PAN FORMED BAFFLE. FORM AS SHOWN. 1" FLANGE AT PERIMETER TO PROVIDE ATTACHMENT SURFACE FOR CLADDING. PROVIDE INTERMITTENTLY VERTICALLY AS REQUIRED FOR SUPPORT OF ALUMINUM ANGLE POLE CLADDING.
- 2"x2"x. 25" STEEL ANGLE(S) (LLH) WELDED TO SUPPORT TUBE TO ALIGN WITH BAFFLES TO PROVIDE ATTACHMENT SURFACE FOR BOLT CONNECTION OF BAFFLES.
- 2"x 2"x .25" STEEL TUBE(S) WELD TO HEAD SUPPORT TUBE FOR SUPPORT OF SIGN FACE FRAME. WELD .25" STEEL SADDLE PLATES ON TUBES FOR BOLT ATTACHMENT OF SIGN FACE FRAME TO PLATES.
- .25" STEEL SADDLE PLATES. WELD TO TOPS OF 2x2 STEEL TUBES WELDED TO HEAD SUPPORT TUBE TO PROVIDE ATTACHMENT SURFACES TO ANCHOR THE FACE FRAMING TUBES TO STRUCTURE. PRE-DRILL PLATES AS REQUIRED FOR BOLT ATTACHMENT.
- U.L. APPROVED PASS THROUGH GROMMET AS REQUIRED FOR WIRING.
- .125" ALUMINUM ANGLE FRAMING FOR HEAD CLADDING.
- LOCATE LED POWER SUPPLIES AT SAME END FOR FACE(S) BEHIND ACCESS PANELS FOR EASE OF ACCESS.
- LOCATE U.L. LABEL ON LOWER CORNER OF CLADDING BEHIND SIGN FACE.
- EXTERNAL CUTOFF SWITCH NEXT TO U.L. LABEL
- RUN A BEAD OF CLEAR SILICONE CAULK ACROSS THE TOPS OF THE FABRICATED LETTERS AND FLAGSCAPE ELEMENTS AT THE SIGN FACE TO PREVENT "STREAKING" ON FACE.

**NOTE: REFER TO STANDARDS FOR FURTHER FABRICATION/STRUCTURAL DETAILS**



**A SECTION AT FACE**  
SCALE: 1 1/2" = 1'-0"

**Monument Typical Details**

**FEDERAL HEATH**  
VISUAL COMMUNICATIONS  
www.FederalHeath.com  
625 Market Street, Suite 600 Knoxville, TN 37902  
(865) 246-6020 Fax (865) 246-6021

Manufacturing Facilities:  
Oceanside, CA - Euless, TX - Jacksonville, TX  
Delaware, OH - Racine, WI  
Office Locations:  
Oceanside, CA - Las Vegas, NV - Laughlin, AZ  
Idaho Falls, ID - Euless, TX - Jacksonville, TX - San Antonio, TX  
Houston, TX - Corpus Christi, TX - Indianapolis, IN  
Louisville, KY - Knoxville, TN - Grafton, WI - Delaware, OH  
Willowbrook, IL - Tunica, MS - Atlanta, GA  
Tampa, FL - Daytona Beach, FL - Orlando, FL

Revisions:  
**R1 BW 2.26.21 Revise red vinyl spec for A & fab specs for C.**

Colors Depicted In This Rendering May Not Match Actual Finished Materials. Refer To Product Samples For Exact Color Match.

Client Approval/Date: \_\_\_\_\_  
Landlord Approval/Date: \_\_\_\_\_

Account Rep: **John Brown**  
Project Manager: **Kenny Smith**  
Drawn By: **Brian Wood**

**Underwriters Laboratories Inc.** **nec**  
ELECTRICAL TO USE U.L. LISTED COMPONENTS AND SHALL MEET ALL N.E.C. STANDARDS  
ALL ELECTRICAL SIGNS ARE TO COMPLY WITH U.L. 48 AND ARTICLE 600 OF THE N.E.C. STANDARDS, INCLUDING THE PROPER GROUNDING AND BONDING OF ALL SIGNS.

Project / Location:  
**BANK OF AMERICA**  
Location # WA3-143  
2830 80th Avenue SE  
Mercer Island, WA 98040

Job Number: **23-60944-10**  
Date: **September 28, 2020**  
Sheet Number: **4** Of **28**  
Design Number: **23-60944-10 R1**

This original drawing is provided as part of a planned project and is not to be exhibited, copied or reproduced without the written permission of Federal Heath Sign Company, LLC or its authorized agent. ©FHSC



EXISTING SIGNAGE | TO BE REMOVED & DISCARDED | PATCH & PAINT HOLES T/M FASCIA COLOR



**B1**  
002

PROPOSED SIGNAGE | CENTER VERTICALLY ON FASCIA IN SAME POSITION AS EXISTING SIGN  
**NOTE: POWER SUPPLIES TO BE HOUSED IN CUSTOM ALUMINUM RACEWAY MOUNTED TO BACK OF FASCIA (PAINT SATIN BLACK)**



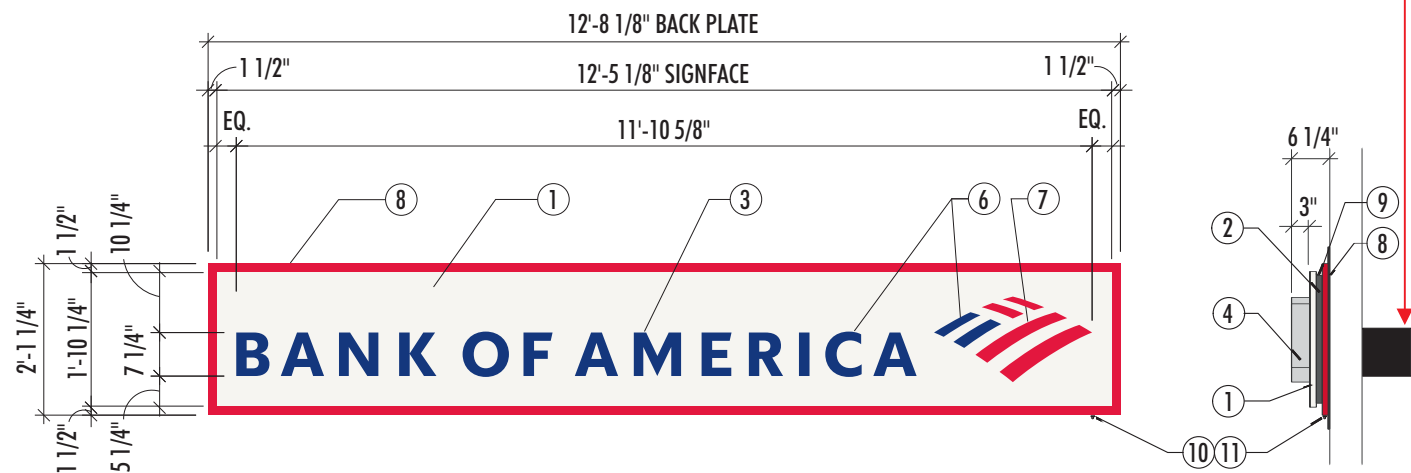
EXISTING SIGNAGE | TO BE REMOVED & DISCARDED | PATCH & PAINT HOLES T/M FASCIA COLOR



**B2** PROPOSED SIGNAGE | CENTER VERTICALLY ON FASCIA IN SAME POSITION AS EXISTING SIGN  
**003** **NOTE: POWER SUPPLIES TO BE HOUSED IN CUSTOM ALUMINUM RACEWAY MOUNTED TO BACK OF FASCIA (PAINT SATIN BLACK)**

## NON-STANDARD BACK-WALL RACEWAY

**NOTE: POWER SUPPLIES TO BE HOUSED IN CUSTOM ALUMINUM RACEWAY MOUNTED TO BACK OF FASCIA (PAINT SATIN BLACK)**



**B** D4ng | BOA HORIZONTAL WALL SIGN | CHANNEL LETTERS | QTY: TWO (2) | 26.66 SQ.FT. **SIDE VIEW**  
 SCALE : 3/8" = 1'-0"

002  
003

**LARGE WALL SIGN (TYPICAL) COLOR SPECS:**

**PAINT:**

- BOA RED | MATTHEWS RED #MP 49696, AKZO NOBEL #SIGN 20119
- GARBO SILVER | MATTHEWS #MP02540R14405 LVG FULL GLOSS
- BOA DARK GRAY | (PMS 425) MATTHEWS #MP58477

**FILM:**

- TRANSLUCENT BLUE | 3M 3630-8530 W/ OVERLAM 3M 3660M
- TRANSLUCENT RED | 3M 3630-2413 W/ OVERLAM 3M 3660M

**ACRYLIC:**

- 1/2" PLASKOLITE 2406 LD ACRYLIC

**LETTER | FLAGSCAPE RETURNS:**

- .040 COIL BRITE BRUSHED CLEAR (BY ALUMET SUPPLY)

**GENERAL NOTES:**

- FINAL SIZING FOR ALL STRUCTURAL MEMBERS (i.e. COLUMNS, MATCH PLATES, CONNECTION BOLTS, ANCHOR BOLTS, FOUNDATIONS AND REINFORCEMENT) TO BE SIZED BY A LICENSED ENGINEER TO MEET OR EXCEED ALL APPLICABLE LOCAL, STATE AND FEDERAL CODES.
- FABRICATOR IS RESPONSIBLE FOR THE PREVENTION OF ANY LIGHT LEAKS.
- LEADS FROM BACK OF ILLUMINATED LETTERS / SYMBOL SHALL BE A MINIMUM OF 6'-0" IN LENGTH MEASURED FROM THE BACK SURFACE OF THE LETTERS / SYMBOL.
- PAINT INTERIORS OF ALL CABINETS WITH SPRAY-LAT STAR BRITE WHITE LIGHT ENHANCEMENT PAINT.
- ALL PAINT TO BE TWO-PART POLYURETHANE.
- COLOR FILM TO BE MATCHED IN 3M #3630 SERIES FILM.

**SPECIFICATIONS:**

**NOTES FOR CHANNEL LETTERS ON BACKER PANEL**

1. SIGN FACE TO BE .125" ALUMINUM. FORM AS SHOWN. CHEM WELD 1"x1"x .125" ALUMINUM TUBE FRAME AT PERIMETER TO FORM SIGN BOX. MITER CUT, WELD AND GRIND SMOOTH AT CORNERS. PAINT FINISH FACE AND TUBE FRAME GARBO SILVER. GLOSS FINISH.
2. 2"x2"x.125" ALUMINUM ANGLE FRAME. FORM AS SHOWN. PAINT FINISH BANK OF AMERICA DARK GRAY. SEMI-GLOSS FINISH. MECHANICALLY ATTACH TO 1"x TUBE FRAME WITH COUNTERSUNK FLATHEAD STAINLESS STEEL SCREWS. PAINT SCREW HEADS TO MATCH.
3. LETTER FACE TO BE 1/2" PLASKOLITE 2406 LD ACRYLIC. ROUT 5/16" FROM BACK TO FRONT LEAVING A 3/16" THICK BY 5/32" WIDE "SHOULDER" AT THE FACE. FIRST SURFACE DECORATE WITH BANK OF AMERICA BLUE TRANSLUCENT FILM WITH OVER LAMINATE. USE ARTWORK PROVIDED BY DESIGNER. EXPOSED RETURNS TO HAVE A MILL FINISH. SECURE WITH 3/8" SHORT SHANK FLATHEAD STAINLESS STEEL SCREWS INTO CENTER OF 3/8" ACRYLIC FACE RETURN. PRE-DRILL ONLY TO SCREW DEPTH TO PREVENT TELEGRAPHING.
4. LETTER RETURNS TO BE .040" ALUMINUM COIL BRITE BRUSHED CLEAR BY ALUMET SUPPLY. (888-925-8638) FORM AS SHOWN. USE ARTWORK PROVIDED BY DESIGNER. PROVIDE WEEP HOLE ON BOTTOM OF LETTERS AND SYMBOLS. RUN A BEAD OF CLEAR SILICONE CAULK ACROSS THE TOPS OF THE FABRICATED LETTERS AND FLAGSCAPE ELEMENTS AT THE SIGN FACE TO PREVENT "STREAKING" ON FACE.
5. LETTER BACKS TO BE .090" ALUMINUM. PAINT FINISH INTERIOR SURFACES WITH LIGHT ENHANCEMENT PAINT.
6. BLUE PORTIONS OF SYMBOL TO BE 1/2" PLASKOLITE 2406 LD ACRYLIC. ROUT 5/16" FROM BACK TO FRONT LEAVING A 3/16" THICK BY 5/32" WIDE "SHOULDER" AT THE FACE. FIRST SURFACE DECORATE WITH BANK OF AMERICA BLUE TRANSLUCENT FILM WITH OVER LAMINATE. USE ARTWORK PROVIDED BY DESIGNER. EXPOSED RETURNS TO HAVE A MILL FINISH. SECURE WITH 3/8" SHORT SHANK FLATHEAD STAINLESS STEEL SCREWS INTO CENTER OF 3/8" ACRYLIC FACE RETURN. PRE-DRILL ONLY TO SCREW DEPTH TO PREVENT TELEGRAPHING.
7. RED PORTIONS OF SYMBOL FACE TO BE 1/2" PLASKOLITE 2406 LD ACRYLIC. ROUT 5/16" FROM BACK TO FRONT LEAVING A 3/16" THICK BY 5/32" WIDE "SHOULDER" AT THE FACE. FIRST SURFACE DECORATE WITH BANK OF AMERICA RED TRANSLUCENT FILM WITH OVER LAMINATE. USE ARTWORK PROVIDED BY DESIGNER. EXPOSED RETURNS TO HAVE A MILL FINISH. SECURE WITH 3/8" SHORT SHANK FLATHEAD STAINLESS STEEL SCREWS INTO CENTER OF 3/8" ACRYLIC FACE RETURN. PRE-DRILL ONLY TO SCREW DEPTH TO PREVENT TELEGRAPHING.
8. 1"x ALUMINUM TUBE FRAME AT PERIMETER OF BACKING SHEET. SIZE AS REQUIRED TO ACHIEVE CORRECT BORDER SIZE FOR EACH SIGN TYPE. REFER TO ELEVATIONS FOR BORDER DIMENSIONS. PAINT FINISH ALL EXPOSED SURFACES BANK OF AMERICA RED. SEMI-GLOSS FINISH.
9. HEADER PANEL TO HINGE WITH S.S. PIANO HINGE. ATTACH TO 2"x2" ANGLE AS REQUIRED.
10. LOCATE U.L. LABEL ON BOTTOM SIDE OF BACKING TUBE ON RIGHT SIDE OF SIGN.
11. EXTERNAL CUTOFF SWITCH NEXT TO U.L. LABEL.



**VISUAL COMMUNICATIONS**  
www.FederalHeath.com

625 Market Street, Suite 600 Knoxville, TN 37902  
(865) 246-6020 Fax (865) 246-6021

Manufacturing Facilities:  
Oceanside, CA - Euless, TX - Jacksonville, TX  
Delaware, OH - Racine, WI  
Office Locations:  
Oceanside, CA - Las Vegas, NV - Laughlin, AZ  
Idaho Falls, ID - Euless, TX - Jacksonville, TX - San Antonio, TX  
Houston, TX - Corpus Christi, TX - Indianapolis, IN  
Louisville, KY - Knoxville, TN - Grafton, WI - Delaware, OH  
Willowbrook, IL - Tunica, MS - Atlanta, GA  
Tampa, FL - Daytona Beach, FL - Orlando, FL

**Building Quality Signage Since 1901**

Revisions:

R1 BW 2.26.21 Revise red vinyl spec for A & fab specs for C.

Colors Depicted In This Rendering May Not Match Actual Finished Materials. Refer To Product Samples For Exact Color Match.

Client Approval/Date: \_\_\_\_\_

Landlord Approval/Date: \_\_\_\_\_

Account Rep: **John Brown**  
 Project Manager: **Kenny Smith**  
 Drawn By: **Brian Wood**  
 Underwriters Laboratories Inc. ELECTRICAL TO USE U.L. LISTED COMPONENTS AND SHALL MEET ALL N.E.C. STANDARDS  
ALL ELECTRICAL SIGNS ARE TO COMPLY WITH U.L. 48 AND ARTICLE 600 OF THE N.E.C. STANDARDS, INCLUDING THE PROPER GROUNDING AND BONDING OF ALL SIGNS.

Project / Location:



Location # WA3-143  
2830 80th Avenue SE  
Mercer Island, WA 98040

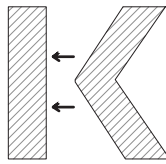
Job Number: **23-60944-10**

Date: **September 28, 2020**

Sheet Number: **7** Of **28**

Design Number: **23-60944-10 R1**

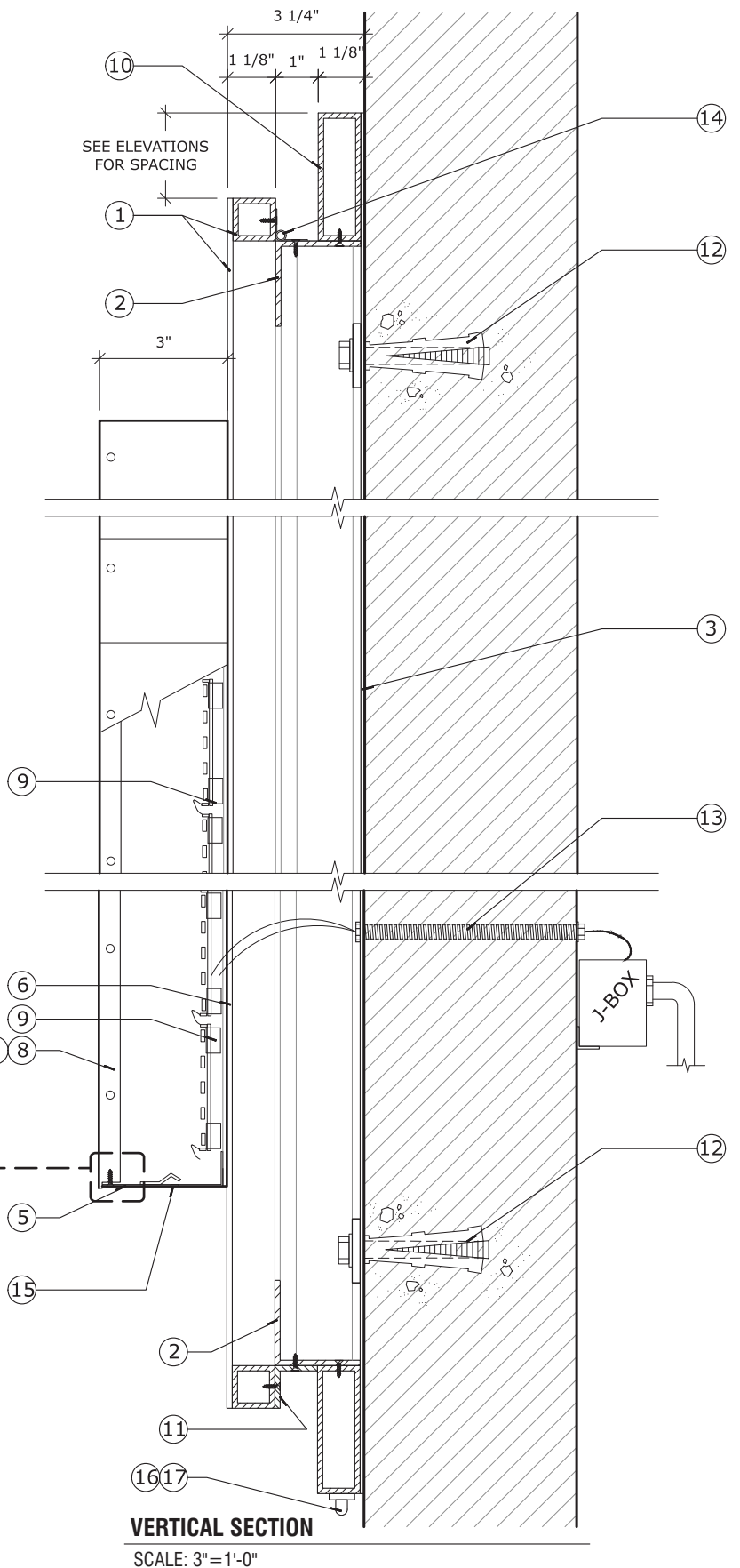
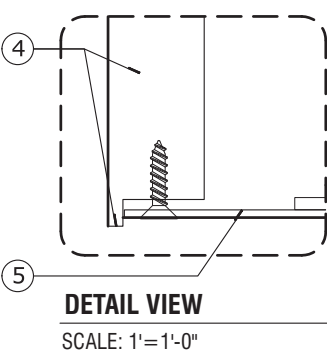
This original drawing is provided as part of a planned project and is not to be exhibited, copied or reproduced without the written permission of Federal Heath Sign Company, LLC or its authorized agent. ©FHSC



THE LETTER "K" IS TO BE FABRICATED IN 2 SEPARATE ELEMENTS AND KISSED TOGETHER AT THE POINT. CAULK THE SEAM BETWEEN THE 2 ELEMENTS AFTER INSTALLATION.

INSTALLATION OF THIS SIGN SHALL CONFORM TO ARTICLE 600 OF THE NEC, UL48, AND OR OTHER APPLICABLE LOCAL CODES, INCLUDING PROPER GROUNDING AND BONDING OF SIGN.

LOCATION OF DISCONNECT SWITCH AFTER INSTALLATION SHALL COMPLY WITH ARTICLE 600.6(A) OF THE NEC.



**NOTES FOR CHANNEL LETTERS ON BACKER PANEL**

- SIGN FACE TO BE .125" ALUMINUM. FORM AS SHOWN. CHEM WELD 1"x1"x .125" ALUMINUM TUBE FRAME AT PERIMETER TO FORM SIGN BOX. MITER CUT, WELD AND GRIND SMOOTH AT CORNERS. PAINT FINISH FACE AND TUBE FRAME GARBO SILVER. GLOSS FINISH.
- 2"x2"x.125" ALUMINUM ANGLE FRAME. FORM AS SHOWN. PAINT FINISH BANK OF AMERICA DARK GRAY. SEMI-GLOSS FINISH. MECHANICALLY ATTACH TO 1"x TUBE FRAME WITH COUNTERSUNK FLATHEAD STAINLESS STEEL SCREWS. PAINT SCREW HEADS TO MATCH.
- .125" ALUMINUM BACKING SHEET. FORM AS SHOWN. PAINT FINISH EXPOSED SURFACES BANK OF AMERICA RED. SEMI-GLOSS FINISH. ATTACH TO EXISTING WALL WITH EXPANSION BOLTS AS REQUIRED THROUGH .125" ALUMINUM REINFORCEMENT BANDS ON BACKING SHEET. WELD 1"x ALUMINUM TUBE FRAME AT PERIMETER. MITER CUT, WELD AND GRIND SMOOTH AT CORNERS. PAINT FINISH BANK OF AMERICA RED. SEMI-GLOSS FINISH. WELD TO BACKING SHEET.
- LETTER FACE TO BE 1/2" PLASKOLITE 2406 LD ACRYLIC. ROUT 5/16" FROM BACK TO FRONT LEAVING A 3/16" THICK BY 5/32" WIDE "SHOULDER" AT THE FACE. FIRST SURFACE DECORATE WITH BANK OF AMERICA BLUE TRANSLUCENT FILM WITH OVER LAMINATE. USE ARTWORK PROVIDED BY DESIGNER. EXPOSED RETURNS TO HAVE A MILL FINISH. SECURE WITH 3/8" SHORT SHANK FLATHEAD STAINLESS STEEL SCREWS INTO CENTER OF 3/8" ACRYLIC FACE RETURN. PRE-DRILL ONLY TO SCREW DEPTH TO PREVENT TELEGRAPHING
- LETTER RETURNS TO BE .040" ALUMINUM COIL BRITE BRUSHED CLEAR BY ALUMET SUPPLY. (888-925-8638) FORM AS SHOWN. USE ARTWORK PROVIDED BY DESIGNER. PROVIDE WEEP HOLE ON BOTTOM OF LETTERS AND SYMBOLS. RUN A BEAD OF CLEAR SILICONE CAULK ACROSS THE TOPS OF THE FABRICATED LETTERS AND FLAGSCAPE ELEMENTS AT THE SIGN FACE
- TO PREVENT "STREAKING" ON FACE.
- LETTER BACKS TO BE .090" ALUMINUM. PAINT FINISH INTERIOR SURFACES WITH LIGHT ENHANCEMENT PAINT.
- BLUE PORTIONS OF SYMBOL TO BE 1/2" PLASKOLITE 2406 LD ACRYLIC. ROUT 5/16" FROM BACK TO FRONT LEAVING A 3/16" THICK BY 5/32" WIDE "SHOULDER" AT THE FACE. FIRST SURFACE DECORATE WITH BANK OF AMERICA BLUE TRANSLUCENT FILM WITH OVER LAMINATE. USE ARTWORK PROVIDED BY DESIGNER. EXPOSED RETURNS TO HAVE A MILL FINISH. SECURE WITH 3/8" SHORT SHANK FLATHEAD STAINLESS STEEL SCREWS INTO CENTER OF 3/8" ACRYLIC FACE RETURN. PRE-DRILL ONLY TO SCREW DEPTH TO PREVENT TELEGRAPHING.
- RED PORTIONS OF SYMBOL FACE TO BE 1/2" PLASKOLITE 2406 LD ACRYLIC. ROUT 5/16" FROM BACK TO FRONT LEAVING A 3/16" THICK BY 5/32" WIDE "SHOULDER" AT THE FACE. FIRST SURFACE DECORATE WITH BANK OF AMERICA RED TRANSLUCENT FILM WITH OVER LAMINATE. USE ARTWORK PROVIDED BY DESIGNER. EXPOSED RETURNS TO HAVE A MILL FINISH. SECURE WITH 3/8" SHORT SHANK FLATHEAD STAINLESS STEEL SCREWS INTO CENTER OF 3/8" ACRYLIC FACE RETURN. PRE-DRILL ONLY TO SCREW DEPTH TO PREVENT TELEGRAPHING.
- LED LIGHT SOURCE TO BE AGILIGHT OR APPROVED EQUAL LED MODULES AS REQUIRED TO PROVIDE EVEN ILLUMINATION ACROSS SIGN FACE WITH OUT HOT SPOTS OR SHADOWS. COLOR TO BE WHITE 6500K. LED MANUFACTURER TO PROVIDE MODULE SPECIFICATION, LAYOUT AND POWER SUPPLY SPECIFICATION AND QUANTITY.
- 1"x ALUMINUM TUBE FRAME AT PERIMETER OF BACKING SHEET. SIZE AS REQUIRED TO ACHIEVE CORRECT BORDER SIZE FOR EACH SIGN TYPE. REFER TO ELEVATIONS FOR BORDER DIMENSIONS. PAINT FINISH ALL EXPOSED SURFACES BANK OF AMERICA RED. SEMI-GLOSS FINISH.
- 1"x1" ALUMINUM ANGLE ON BOTTOM OF SIGN BOX. CHEM WELD TO 1x1 TUBE FRAME. MECHANICALLY ATTACH TO 2"x2" ANGLE WITH COUNTERSUNK FLATHEAD STAINLESS STEEL SCREWS. PAINT FINISH BANK OF AMERICA DARK GRAY. SEMI-GLOSS FINISH. PAINT SCREWS TO MATCH. ANGLE TO ACT AS RELEASE POINT FOR HINGED SIGN BOX.
- ATTACH TO WALL AS REQUIRED.
- U.L. APPROVED ELECTRICAL PASS THOUGH TO REMOTE POWER SUPPLY AS REQUIRED.
- HEADER PANEL TO HINGE WITH S.S. PIANO HINGE. ATTACH TO 2"x2" ANGLE AS REQUIRED.
- PROVIDE WEEP HOLES AND LIGHT SCREENS AS REQUIRED TO MEET UL.
- LOCATE U.L. LABEL ON BOTTOM SIDE OF BACKING TUBE ON RIGHT SIDE OF SIGN.
- EXTERNAL CUTOFF SWITCH NEXT TO U.L. LABEL.

**GENERAL NOTES:**

- FINAL SIZING FOR ALL STRUCTURAL MEMBERS (i.e. COLUMNS, MATCH PLATES, CONNECTION BOLTS, ANCHOR BOLTS, FOUNDATIONS AND REINFORCEMENT) TO BE SIZED BY A LICENSED ENGINEER TO MEET OR EXCEED ALL APPLICABLE LOCAL, STATE AND FEDERAL CODES.
- FABRICATOR IS RESPONSIBLE FOR THE PREVENTION OF ANY LIGHT LEAKS.
- LEADS FROM BACK OF ILLUMINATED LETTERS / SYMBOL SHALL BE A MINIMUM OF 6'-0" IN LENGTH MEASURED FROM THE BACK SURFACE OF THE LETTERS / SYMBOL.
- PAINT INTERIORS OF ALL CABINETS WITH SPRAY-LAT STAR BRITE WHITE LIGHT ENHANCEMENT PAINT.
- ALL PAINT TO BE TWO-PART POLYURETHANE.
- COLOR FILM TO BE MATCHED IN 3M #3630 SERIES FILM.

**CUSTOMER TO PROVIDE DEDICATED BRANCH CIRCUITS FOR SIGNS ONLY PER NEC CODE 600.5**

ALL BRANCH CIRCUITS SHALL BE DEDICATED TO SIGNS (INCLUDING GROUND AND NEUTRAL) AND SHALL NOT BE SHARED WITH OTHER LOADS. PROPERLY SIZED GROUND WIRE THAT CAN BE TRACED BACK TO BREAKER PANEL IS REQUIRED.

**INSTALLER REQUIREMENTS**

ALL MOUNTING HARDWARE, SECONDARY WIRING AND CONDUITS ARE TO BE PROVIDED BY THE INSTALLATION CONTRACTOR. ALL PENETRATIONS IN THE WALL ARE TO BE SEALED WITH SILICONE AND TO BE WATERTIGHT.

ANY DEVIATION FROM FEDERAL HEALTH REQUIREMENTS MAY RESULT IN DAMAGE TO OR IMPROPER OPERATION OF SIGNAGE, CAUSING DELAYS AND ADDITIONAL COSTS.

**NEW & REMODEL CONSTRUCTION**

ADEQUATE BEHIND THE WALL BACKING AND ACCESS IS REQUIRED FOR THE INSTALLATION OF NEW SIGNAGE. CUSTOMER TO FORWARD APPROVED SIGNAGE DRAWINGS TO THE ON SITE CONTACT TO INSURE THAT THE REQUIRED PROVISIONS ARE MADE DURING CONSTRUCTION, PRIOR TO THE SIGN INSTALLATION.

**INSTALLER REQUIREMENTS FOR EIFS WALLS**

IT IS THE RESPONSIBILITY OF THE INSTALLATION CONTRACTOR TO PROVIDE ANY WALL SPACERS REQUIRED TO KEEP EIFS WALL MATERIAL FROM BEING COMPACTED DURING INSTALLATION OF ANY MOUNTING BOLTS REQUIRED FOR SIGNAGE.

**GENERAL NOTE**

- INSTALLER SHALL VERIFY WALL CONDITION IN THE FIELD.
- TYPE, SIZE AND NUMBER OF FASTENERS TO BE DETERMINED.
- ALL BOLT HOLES TO BE DRILLED OR PUNCHED.
- ISOLATE ALL ALUMINUM FROM STEEL.

**120V-20 AMP CIRCUIT ELECTRICAL PRIMARY TO WITHIN 5' OF SIGN LOCATION AND THE FINAL HOOK-UP TO BE BY THE CUSTOMER'S CERTIFIED ELECTRICIAN. NUMBER OF CIRCUITS PER SIGN TO BE PER FEDERAL HEALTH SIGN REQUIREMENTS.**

ALL (ELECTRICAL) SIGNS SHALL CONFORM TO THE REQUIREMENTS OF ARTICLE 600 OF THE N.E.C. AND U.L. 48 ALONG WITH OTHER APPLICABLE STATE & LOCAL CODE REQUIREMENTS. THIS INCLUDES PROPER GROUNDING AND BONDING OF SIGN.

**ELECTRICAL REQUIREMENTS**

Total: **T.B.D.** Amps

**# of 120V, 20A Circuits Req'd T.B.D.**

ALL BRANCH CIRCUITS SHALL BE DEDICATED TO SIGNS (INCLUDING GROUND AND NEUTRAL) AND SHALL NOT BE SHARED WITH OTHER LOADS.

**WARRANTY NOTICE**

CERTAIN ELECTRICAL COMPONENTS OF SIGNS WILL FAIL PREMATURELY IF NOT SHUT OFF FOR A PERIOD OF TIME. ONCE EACH DAY FOR BEST PERFORMANCE WE RECOMMEND THAT SIGNS BE CONNECTED TO AN AUTOMATIC CONTROLLING DEVICE SUCH AS AN EMERGENCY MANAGEMENT SYSTEM, TIME CLOCK OR PHOTO CELL TO CONTROL THE DAILY SHUT-OFF PERIOD. FAILURE TO FOLLOW THESE RECOMMENDATIONS CAN CAUSE DAMAGE TO ELECTRICAL COMPONENTS OF THE SIGN AND VOID THE WARRANTY. SOME DIMMING DEVICES WILL ADVERSELY AFFECT THE ELECTRICAL COMPONENTS OF THE SIGN IT IS ATTACHED TO, CAUSING FAILURE. ANY DIMMING OF THE SIGN WITHOUT CONSULTATION WITH FEDERAL HEALTH SIGN CO. WILL VOID THE WARRANTY.

**Generic Fabrication Details | Horizontal Channel Letters on Backer Panel**

**FEDERAL HEALTH**

**VISUAL COMMUNICATIONS**  
www.FederalHeath.com

625 Market Street, Suite 600 Knoxville, TN 37902  
(865) 246-6020 Fax (865) 246-6021

Manufacturing Facilities:  
Oceanside, CA - Euless, TX - Jacksonville, TX - Delaware, OH - Racine, WI

Office Locations:  
Oceanside, CA - Las Vegas, NV - Laughlin, AZ  
Idaho Falls, ID - Euless, TX - Jacksonville, TX - San Antonio, TX  
Houston, TX - Corpus Christi, TX - Indianapolis, IN  
Louisville, KY - Knoxville, TN - Grafton, WI - Delaware, OH  
Willowbrook, IL - Tunica, MS - Atlanta, GA  
Tampa, FL - Daytona Beach, FL - Orlando, FL

**Building Quality Signage Since 1901**

Revisions:

**R1 BW 2.26.21 Revise red vinyl spec for A & fab specs for C.**

Colors Depicted In This Rendering May Not Match Actual Finished Materials. Refer To Product Samples For Exact Color Match.

Client Approval/Date: \_\_\_\_\_

Landlord Approval/Date: \_\_\_\_\_

Account Rep: **John Brown**

Project Manager: **Kenny Smith**

Drawn By: **Brian Wood**

**UL** Underwriters Laboratories Inc. **nec** ELECTRICAL TO USE U.L. LISTED COMPONENTS AND SHALL MEET ALL N.E.C. STANDARDS

ALL ELECTRICAL SIGNS ARE TO COMPLY WITH U.L. 48 AND ARTICLE 600 OF THE N.E.C. STANDARDS, INCLUDING THE PROPER GROUNDING AND BONDING OF ALL SIGNS.

Project / Location:

**BANK OF AMERICA**

Location # **WA3-143**  
2830 80th Avenue SE  
Mercer Island, WA 98040

Job Number: **23-60944-10**

Date: **September 28, 2020**

Sheet Number: **8** Of **28**

Design Number: **23-60944-10 R1**

This original drawing is provided as part of a planned project and is not to be exhibited, copied or reproduced without the written permission of Federal Heath Sign Company, LLC or its authorized agent. ©FHSC





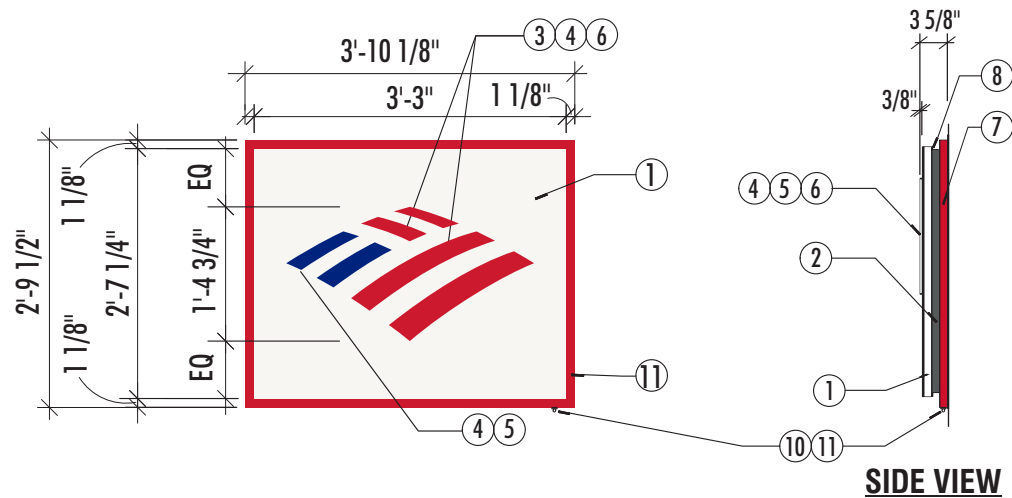
EXISTING SIGNAGE | PANEL TO BE REMOVED & DISCARDED | PATCH & PAINT HOLES T/M FASCIA COLOR



**C**  
004

PROPOSED SIGNAGE | CENTER VERTICALLY ON FASCIA IN SAME POSITION AS EXISTING SIGN

**NOTE: EXISTING SIGN IS NON-ILLUMINATED | CUSTOMER TO BRING POWER TO NEW SIGN AREA BEHIND SIGN PANEL**



**C** CUSTOM WALL SIGN FOR EXISTING PYLON STRUCTURE | QTY: ONE (1) | 9.59 SQ.FT.  
 004 SCALE : 1/2" = 1'-0"

**WALL SIGN (TYPICAL) COLOR SPECS:**

**PAINT:**

- BOA RED | MATTHEWS RED #MP 49696, AKZO NOBEL #SIGN 20119
- GARBO SILVER | MATTHEWS #MP02540R14405 LVG FULL GLOSS
- BOA DARK GRAY | (PMS 425) MATTHEWS #MP58477

**FILM:**

- 3635-30 DIFFUSER FILM

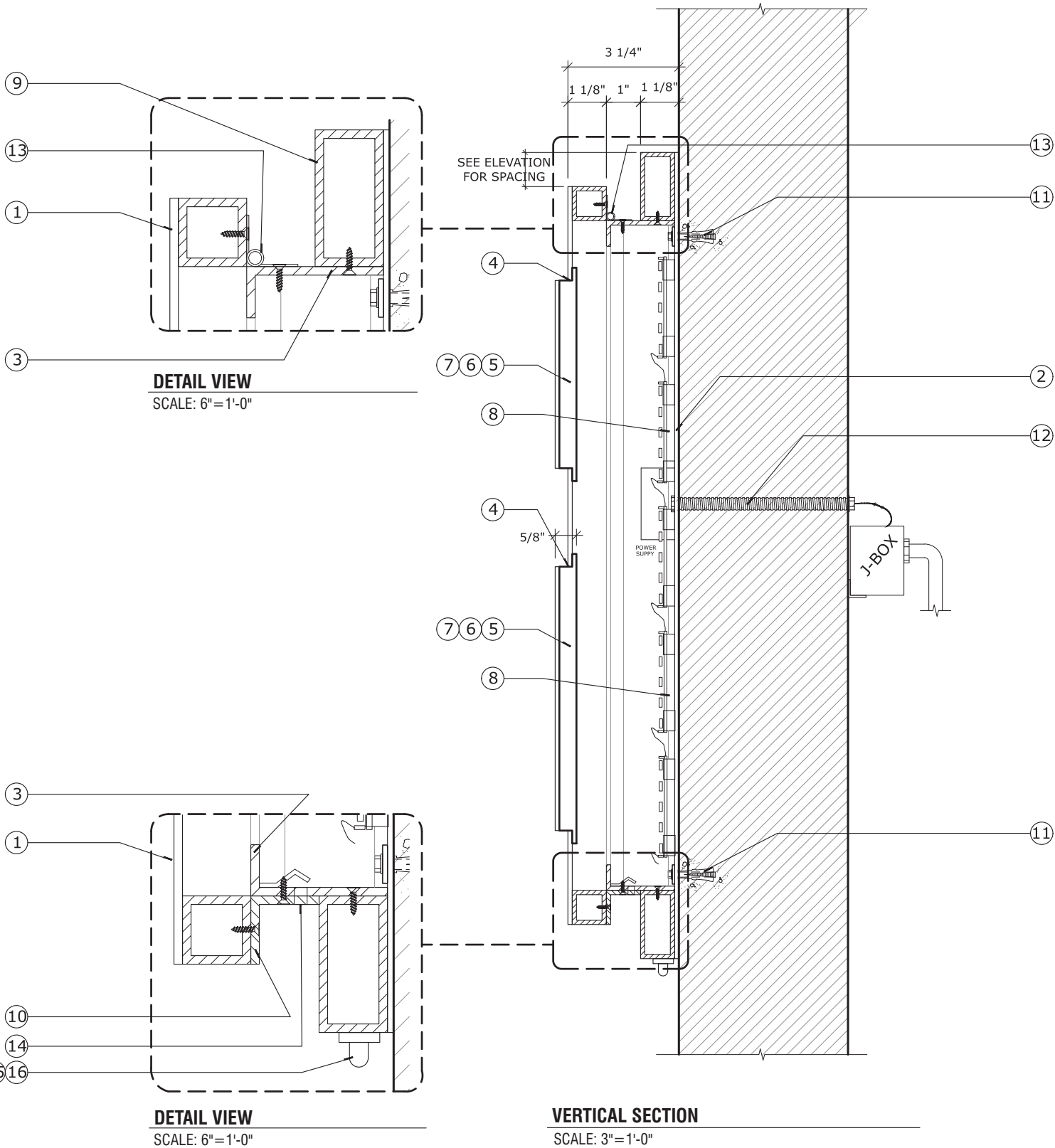
**ACRYLIC:**

- 1/2" PLASKOLITE 2406 LD ACRYLIC
- .118" BLUE TRANSLUCENT ACRYLIC #2050
- .118" RED TRANSLUCENT ACRYLIC #2793

**SPECIFICATIONS:**

**NOTES FOR PUSH-THRU COPY ON BACKER PANEL**

1. .125" ROUTED ALUMINUM SIGN PANEL. CHEM WELD 1"x1"x .125" ALUMINUM TUBE FRAME AT PERIMETER TO FORM SIGN BOX. MITER CUT, WELD AND GRIND SMOOTH AT CORNERS. PAINT FINISH FACE AND TUBE FRAME GARBO SILVER. GLOSS FINISH.
2. .125" ALUMINUM ANGLE FRAME. FORM AS SHOWN. PAINT FINISH BANK OF AMERICA DARK GRAY. SEMI-GLOSS FINISH. MECHANICALLY ATTACH TO 1x TUBE FRAME WITH COUNTERSUNK FLATHEAD STAINLESS STEEL SCREWS. PAINT SCREW HEADS TO MATCH.
3. ROUT OPENINGS FOR PUSH THROUGH LETTERS USING ARTWORK PROVIDED BY DESIGNER. DIAMETER OF CUTS SHOULD BE AS TIGHT AS POSSIBLE.
4. 1/2" CLEAR POCKET ROUTED LETTERS AND FLAGSCAPE. ROUT BACK FROM FACE .625" TO PROVIDE A CONTINUOUS 1/8" "SHOULDER" TO ALLOW SECOND SURFACE RETENTION BY .125" CLEAR BACKINGS SHEET. FIRST SURFACE CHEM WELD .118 RED AND BLUE ACRYLIC. SIGN MANUFACTURER TO FOLLOW ACRYLIC MANUFACTURERS RECOMMENDATION FOR CHEM WELDING WITHOUT BUBBLES OR DE-LAMINATION IN FUTURE. RETURNS TO HAVE A MILL FINISH. SECOND SURFACE DECORATE WITH 3M 3635-30 DIFFUSER FILM. USE ARTWORK PROVIDED BY DESIGNER.
5. FIRST SURFACE CHEM WELD Bank of America AND PORTIONS OF FLAGSCAPE WITH .118" BLUE TRANSLUCENT ACRYLIC #2050.
6. FIRST SURFACE CHEM WELD RED PORTIONS OF FLAGSCAPE WITH .118" RED TRANSLUCENT ACRYLIC #2793.
7. 1"x ALUMINUM TUBE FRAME AT PERIMETER OF BACKING SHEET. SIZE AS REQUIRED TO ACHIEVE CORRECT BORDER SIZE FOR EACH SIGN TYPE. REFER TO ELEVATIONS FOR BORDER DIMENSIONS. PAINT FINISH ALL EXPOSED SURFACES BANK OF AMERICA RED. SEMI-GLOSS FINISH.
8. HEADER PANEL TO HINGE WITH S.S. PIANO HINGE. ATTACH TO BREAK FORMED ANGLE AS REQUIRED.
9. LOCATE U.L. LABEL ON BOTTOM SIDE OF BACKING TUBE ON RIGHT SIDE OF SIGN.
10. EXTERNAL CUTOFF SWITCH NEXT TO U.L. LABEL.



**NOTES FOR PUSH-THRU COPY ON BACKER PANEL**

- .125" ROUTED ALUMINUM SIGN PANEL. CHEM WELD 1"x1"x.125" ALUMINUM TUBE FRAME AT PERIMETER TO FORM SIGN BOX. MITER CUT, WELD AND GRIND SMOOTH AT CORNERS. PAINT FINISH FACE AND TUBE FRAME GARBO SILVER.
- .125" ALUMINUM BACKING SHEET. FORM AS SHOWN. PAINT FINISH EXPOSED SURFACES BANK OF AMERICA RED. SEMI-GLOSS FINISH. ATTACH TO EXISTING WALL WITH EXPANSION BOLTS AS REQUIRED THROUGH .125" ALUMINUM REINFORCEMENT BANDS ON BACKING SHEET. WELD 1"x.125" ALUMINUM TUBE FRAME AT PERIMETER. SIZE AS REQUIRED TO MATCH EXPOSED PORTION OF TUBE FRAME SHOWN ON ELEVATIONS. MITER CUT, WELD AND GRIND SMOOTH AT CORNERS. PAINT FINISH BANK OF AMERICA RED. SEMI-GLOSS FINISH. WELD TO BACKING SHEET.
- .125" ALUMINUM ANGLE FRAME. FORM AS SHOWN. PAINT FINISH BANK OF AMERICA DARK GRAY. SEMI-GLOSS FINISH. MECHANICALLY ATTACH TO RED 1x TUBE FRAME WITH COUNTERSUNK FLATHEAD STAINLESS STEEL SCREWS. PAINT SCREW HEADS TO MATCH.
- ROUT OPENINGS FOR PUSH THROUGH LETTERS USING ARTWORK PROVIDED BY DESIGNER. DIAMETER OF CUTS SHOULD BE AS TIGHT AS POSSIBLE.
- 1/2" CLEAR POCKET ROUTED LETTERS AND FLAGSCAPE. ROUT BACK FROM FACE .625" TO PROVIDE A CONTINUOUS 1/8" "SHOULDER" TO ALLOW SECOND SURFACE RETENTION BY .125" CLEAR BACKINGS SHEET. FIRST SURFACE CHEM WELD .118 RED AND BLUE ACRYLIC. SIGN MANUFACTURER TO FOLLOW ACRYLIC MANUFACTURERS RECOMMENDATION FOR CHEM WELDING WITHOUT BUBBLES OR DE-LAMINATION IN FUTURE. RETURNS TO HAVE A MILL FINISH. SECOND SURFACE DECORATE WITH 3M 3635-30 DIFFUSER FILM. USE ARTWORK PROVIDED BY DESIGNER.
- FIRST SURFACE CHEM WELD Bank of America AND PORTIONS OF FLAGSCAPE WITH .118" BLUE TRANSLUCENT ACRYLIC #2050.
- FIRST SURFACE CHEM WELD RED PORTIONS OF FLAGSCAPE WITH .118" RED TRANSLUCENT ACRYLIC #2793.
- LED LIGHT SOURCE TO BE AGILIGHT OR APPROVED EQUAL LED MODULES AS REQUIRED TO PROVIDE EVEN ILLUMINATION ACROSS SIGN FACE WITH OUT HOT SPOTS OR SHADOWS. COLOR TO BE WHITE 6500K. LED MANUFACTURER TO PROVIDE MODULE SPECIFICATION, LAYOUT AND POWER SUPPLY SPECIFICATION AND QUANTITY.
- 1"x ALUMINUM TUBE FRAME AT PERIMETER OF BACKING SHEET. SIZE AS REQUIRED TO ACHIEVE CORRECT BORDER SIZE FOR EACH SIGN TYPE. REFER TO ELEVATIONS FOR BORDER DIMENSIONS. PAINT FINISH ALL EXPOSED SURFACES BANK OF AMERICA RED. SEMI-GLOSS FINISH.
- 1"x1" ALUMINUM ANGLE ON BOTTOM OF SIGN BOX. CHEM WELD TO 1x1 TUBE FRAME. MECHANICALLY ATTACH TO BREAK FORMED ANGLE FRAME WITH COUNTERSUNK FLATHEAD STAINLESS STEEL SCREWS. PAINT FINISH BANK OF AMERICA DARK GRAY. SEMI-GLOSS FINISH. PAINT SCREWS TO MATCH. ANGLE TO ACT AS RELEASE POINT FOR HINGED SIGN BOX.
- ATTACH TO WALL AS REQUIRED.
- U.L. APPROVED ELECTRICAL PASS THROUGH TO REMOTE POWER SUPPLY AS REQUIRED.
- HEADER PANEL TO HINGE WITH S.S. PIANO HINGE. ATTACH TO 2"x2" ANGLE AS REQUIRED.
- PROVIDE WEEP HOLES AS REQUIRED TO MEET UL.
- LOCATE U.L. LABEL ON BOTTOM SIDE OF BACKING TUBE ON RIGHT SIDE OF SIGN.
- EXTERNAL CUTOFF SWITCH NEXT TO U.L. LABEL.

**GENERAL NOTES:**

- FINAL SIZING FOR ALL STRUCTURAL MEMBERS (i.e. COLUMNS, MATCH PLATES, CONNECTION BOLTS, ANCHOR BOLTS, FOUNDATIONS AND REINFORCEMENT) TO BE SIZED BY A LICENSED ENGINEER TO MEET OR EXCEED ALL APPLICABLE LOCAL, STATE AND FEDERAL CODES.
- FABRICATOR IS RESPONSIBLE FOR THE PREVENTION OF ANY LIGHT LEAKS.
- LEADS FROM BACK OF ILLUMINATED LETTERS / SYMBOL SHALL BE A MINIMUM OF 6'-0" IN LENGTH MEASURED FROM THE BACK SURFACE OF THE LETTERS / SYMBOL.
- PAINT INTERIORS OF ALL CABINETS WITH SPRAY-LAT STAR BRITE WHITE LIGHT ENHANCEMENT PAINT.
- ALL PAINT TO BE TWO-PART POLYURETHANE.
- COLOR FILM TO BE MATCHED IN 3M #3630 SERIES FILM.

**FEDERAL HEATH**  
VISUAL COMMUNICATIONS  
www.FederalHeath.com  
625 Market Street, Suite 600 Knoxville, TN 37902  
(865) 246-6020 Fax (865) 246-6021

Manufacturing Facilities:  
Oceanside, CA - Euless, TX - Jacksonville, TX  
Delaware, OH - Racine, WI  
Office Locations:  
Oceanside, CA - Las Vegas, NV - Laughlin, AZ  
Idaho Falls, ID - Euless, TX - Jacksonville, TX - San Antonio, TX  
Houston, TX - Corpus Christi, TX - Indianapolis, IN  
Louisville, KY - Knoxville, TN - Grafton, WI - Delaware, OH  
Willowbrook, IL - Tunica, MS - Atlanta, GA  
Tampa, FL - Daytona Beach, FL - Orlando, FL

Revisions:  
R1 BW 2.26.21 Revise red vinyl spec for A & fab specs for C.

Colors Depicted In This Rendering May Not Match Actual Finished Materials. Refer To Product Samples For Exact Color Match.

Client Approval/Date: \_\_\_\_\_  
Landlord Approval/Date: \_\_\_\_\_

Account Rep: John Brown  
Project Manager: Kenny Smith  
Drawn By: Brian Wood

Underwriters Laboratories Inc. nfc  
ELECTRICAL TO USE U.L. LISTED COMPONENTS AND SHALL MEET ALL N.E.C. STANDARDS  
ALL ELECTRICAL SIGNS ARE TO COMPLY WITH U.L. 48 AND ARTICLE 600 OF THE N.E.C. STANDARDS, INCLUDING THE PROPER GROUNDING AND BONDING OF ALL SIGNS.

Project / Location:  
**BANK OF AMERICA**  
Location # WA3-143  
2830 80th Avenue SE  
Mercer Island, WA 98040

Job Number: 23-60944-10  
Date: September 28, 2020  
Sheet Number: 11 Of 28  
Design Number: 23-60944-10 R1

This original drawing is provided as part of a planned project and is not to be exhibited, copied or reproduced without the written permission of Federal Heath Sign Company, LLC or its authorized agent. ©FHSC